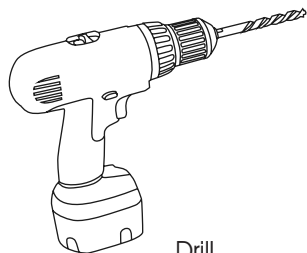


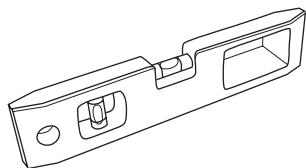
Curtain Pole

Fitting Instructions

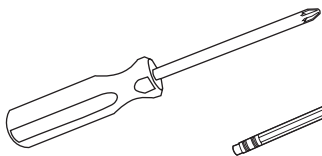
Tools you will need...



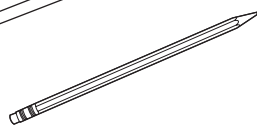
Drill



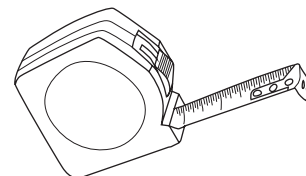
Spirit Level



Screwdriver



Pencil



Tape Measure

how to... fit your curtain pole

Step 1: As a guideline we recommend that the brackets are positioned 10cm up and 10cm out from both sides of the window frame (you may use a spirit level for accuracy). Add a centre bracket if fitting a pole length of 150cm or above, or you are requiring two poles.

Step 2: Remove the back plate and cover from the wall end of the bracket by loosening the grub screw with a hex key (supplied). Position the back plate on the wall where the bracket will be fitted. Use a pencil to mark the exact position of the screw holes that will fix the brackets to the wall.

Step 3: Drill into the wall at the marked positions using an appropriate drill bit for the type of wall. Insert wall plugs, ensuring they are flush with the wall. Then screw the back plate into place using the three screws provided.

Step 4: Replace the back plate cover and the bracket stem and tighten the grub above, ensuring the cup is facing upwards.

Step 5: Check that the pole fits the window (if using 2 poles, ensure each pole is of equal length). We recommend that the pole length is long enough so that it is approx. 20cm beyond each side of the window frame. (This allows on each side 10cm to the bracket fixing, then another 10cm to the end of the pole).

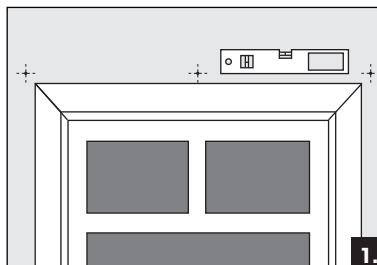
Step 6: If joining two poles together, use the pole joiner supplied to connect them ensuring that the pole joiner is fastened to both poles and the opening is facing down to allow for the centre bracket. Please note the joiner is designed to be used with a cylinder bracket. If using the elbow joint then 2 joiners and 2 brackets are required, one for each side of the joiner.

Step 7: Fit the required number of rings onto the curtain pole, before positioning the pole on the brackets. Finish off by securing the brackets with the small screws provided.

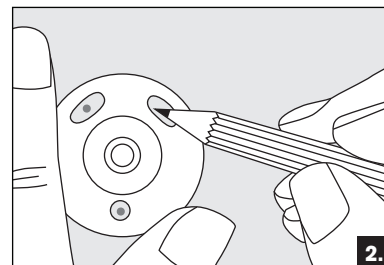
Step 9: Place the last ring on the outer side of the end bracket on both sides, before attaching the finial.

Care: This pole can be cleaned using a soft damp cloth. Avoid excessive moisture in the room as this more cause rust spots to develop on the brackets or rings.

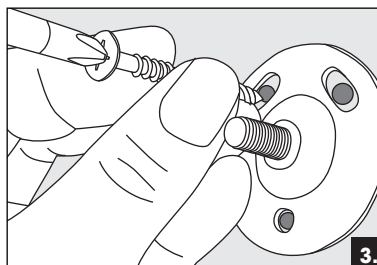
IMPORTANT: We recommend getting your pole professionally cut. Do not cut your acrylic pole with a hacksaw; this can damage the pole. The pole can be cut with a chop saw, but you will need to gently sand the ends to remove the acrylic debris.



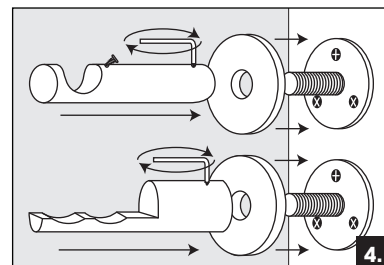
1.



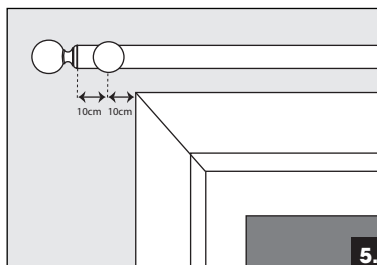
2.



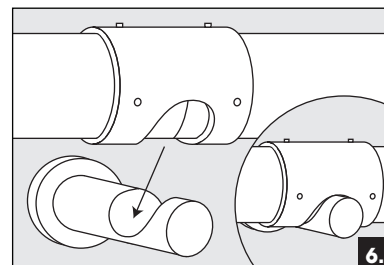
3.



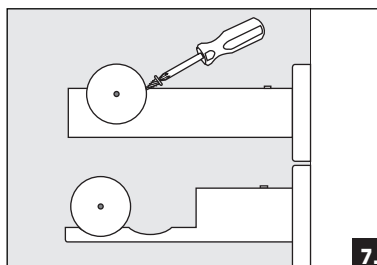
4.



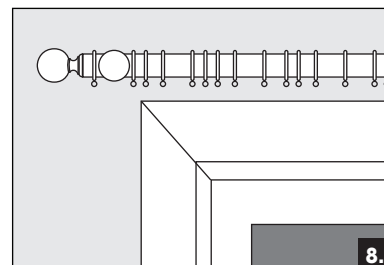
5.



6.



7.



8.